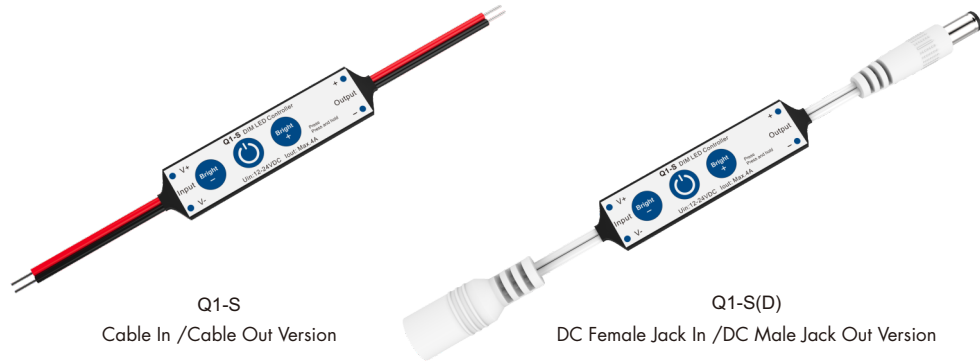


Q1-S, Q1-S(D)

3-Key Single Color LED Mini Controller Without Remote Function



Q1-S
Cable In /Cable Out Version

Q1-S(D)
DC Female Jack In /DC Male Jack Out Version

Features

- 1 channel constant voltage single color LED mini controller.
- 3 key operation with on/off and dimming.
- 4A output, connect with 5 meters single color LED strip.
- 1024 levels 0-100% dimming smoothly without any flash.



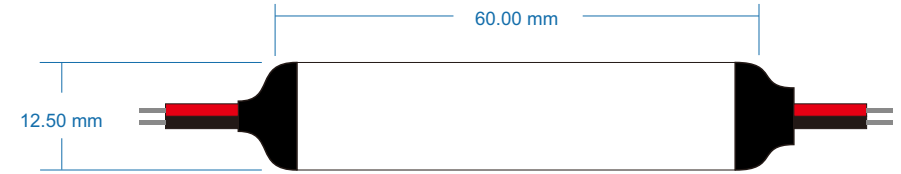
Model List

Model	Photo	Power Connector	LED Connector
Q1-S		Red/Black Cable 10cm	Red/Black Cable 10cm
Q1-S(D)		5.5mm DC Female Jack	5.5mm DC Male Jack

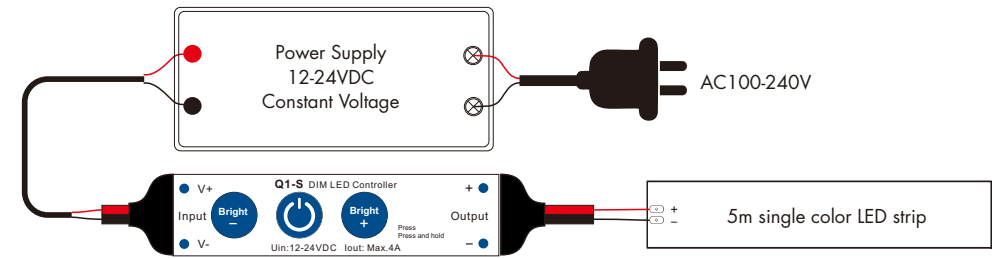
Technical Parameters

Input and Output		Dimming Data		Safety and EMC	
Input voltage	12-24VDC	Dimming level	1024 levels	EMC standard	EN IEC 55015/ EN IEC 61547
Output voltage	12-24VDC	Dimming range	0 -100%	Safety standard	EN 61347-1/-2
Output current	Max. 4A	Dimming curve	linear	Certification	CE RoHS
Output type	Constant voltage	PWM frequency	2000Hz (default)	Package	
Environment		Warranty and Protection		Size	L90x H130mm
Operation temperature	Ta: -30°C ~ +55°C	Warranty	5 years	Gross weight	0.014kg
Case temperature (Max.)	Tc: +85°C	Protection	Reverse polarity Over heat		
IP rating	IP20				

Dimension



Wiring Diagram



Key Function

- Turn on or off light.
- Brightness -, short press 10 levels, long press 1-6s for continuous 256 levels adjustment.
- Brightness +, short press 10 levels, long press 1-6s for continuous 256 levels adjustment.

Dimming Curve

